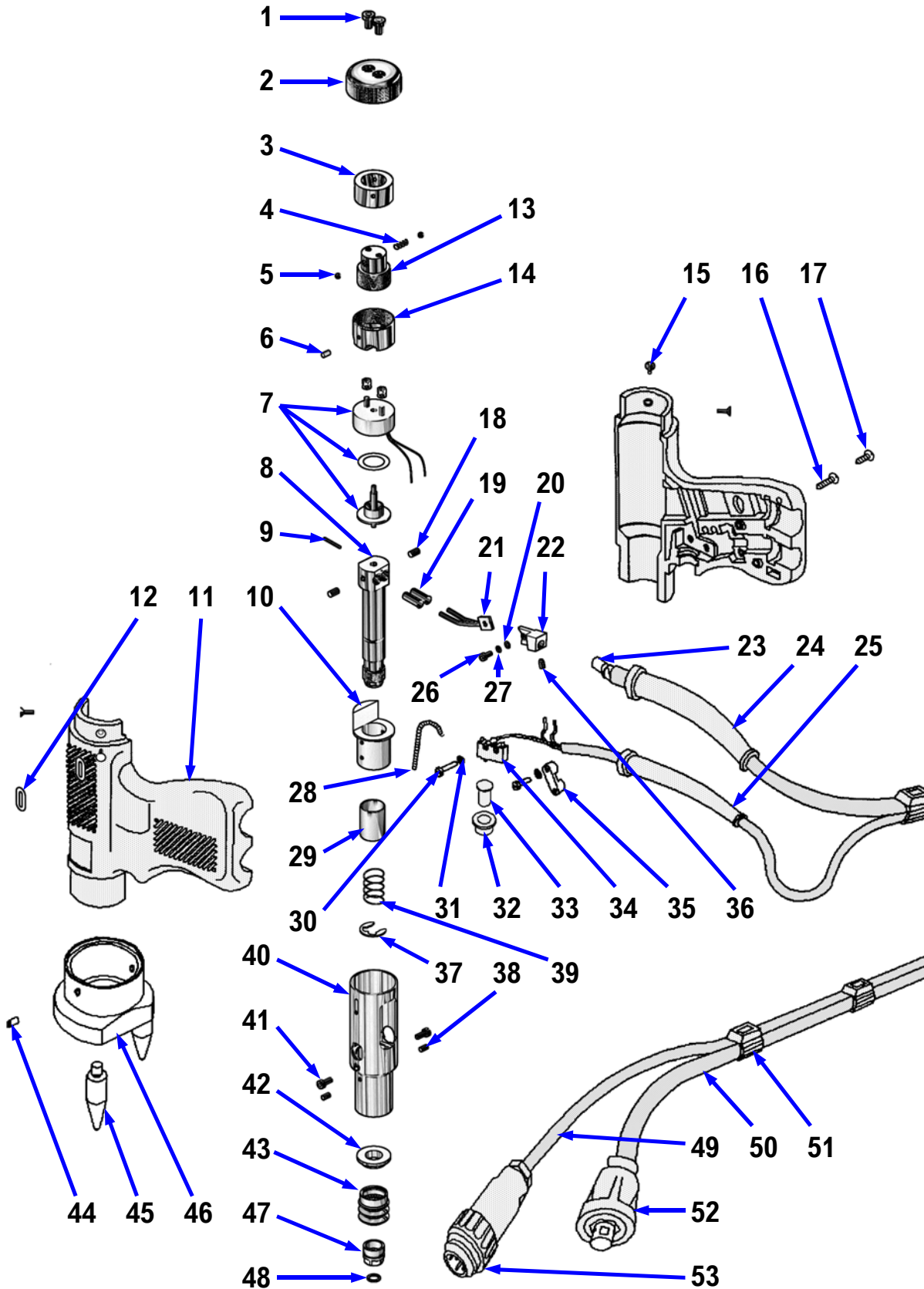


COMPONENT EXPLOSION

MARK V LIFT GAP PISTOL.



PARTS LIST

MARK V LIFT GAP PISTOL.

ITEM	QTY	PART No.	DESCRIPTION
1	2	Z115-04-010	END CAP SCREW
2	1	71-102-067	REAR END CAP
3	1	71-102-066	REAR BUSH
4	1	71-102-073	DETENT SPRING
5	2	81-101-082	DETENT BALL
6	1	71-102-075	INDICATOR PIN
7	1	71-102-056	SOLENOID COIL COMPLETE
8	1	71-102-061	WELDSHAFT
9	1	71-102-015	SPIROL PIN
10	1	71-102-062	SHAFT BUSH
11	1	71-102-069	PISTOL BODY MOULDING (2 PARTS)
12	1	71-102-070	LIFT INDICATION DECAL
13	1	71-102-065	COIL ADJUSTOR
14	1	71-102-064	COIL MOUNTING CUP
15	4	Z205-03-006	BUSH RETAINING SCREW
16	2	Z230-06-958	PISTOL BODY SCREW (LONG)
17	1	Z230-06-912	PISTOL BODY SCREW (SHORT)
18	2	Z400-05-006	GRUB SCREW
19	2	71-101-041	FERRULE (SMALL)
20	1	Z600-04-000	WASHER
21	1	71-102-058	FLEXIBLE BRAID ASSEMBLY
22	1	71-102-030	CABLE TERMINATOR
23	1	71-101-042	FERRULE (LARGE)
24	1	71-101-034	WELD CABLE SUPPORT SLEEVE
25	1	71-101-033	CONTROL CABLE SUPPORT SLEEVE
26	1	Z100-04-010	SCREW
27	1	Z615-04-000	LOCK WASHER

PARTS LIST

MARK V LIFT GAP PISTOL.

ITEM	QTY	PART No.	DESCRIPTION
28	1	71-101-009	CONTACT SPRING
29	1	71-102-071	SHAFT BEARING
30	4	Z210-02-010	SCREW (SWITCH / CABLE GRIP)
31	4	Z600-02-000	WASHER (SWITCH / CABLE GRIP)
32	1	71-101-036	TRIGGER BEZEL
33	1	71-101-035	TRIGGER PUSH BUTTON
34	1	71-101-028	TRIGGER MICRO SWITCH
35	1	71-101-027	CABLE GRIP
36	1	71-102-029	CABLE DOWEL
37	1	71-101-011	SHAFT CIRCLIP
38	2	71-101-007	LINER DOWEL
39	1	71-102-074	SPRING
40	1	71-102-068	LINER SLEEVE
41	2	ZZ100-03-004	SCREW
42	1	71-101-004	BELLOWS RETAINER
43	1	71-101-003	DUST PROTECTION BELLOWS
44	2	Z400-05-004	GRUB SCREW
45	3	79-101-052	TRIPOD LEG
46	1	79-101-051	FRONT END CAP
47	1	71-101-002	CHUCK / COLLET NUT
48	1	71-101-001	“O” RING
49	3.5	71-300-010	CONTROL CABLE (m)
50	3	71-300-002	WELD CABLE (m)
51	6	71-101-032	CABLE TIE CLIP
52	1	71-101-031	CABLE END WELD PLUG
53	1	71-101-030	CABLE END CONTROL PLUG